

# MCHENRY COUNTY BIRTH STATISTICS

McHenry County Department of Health

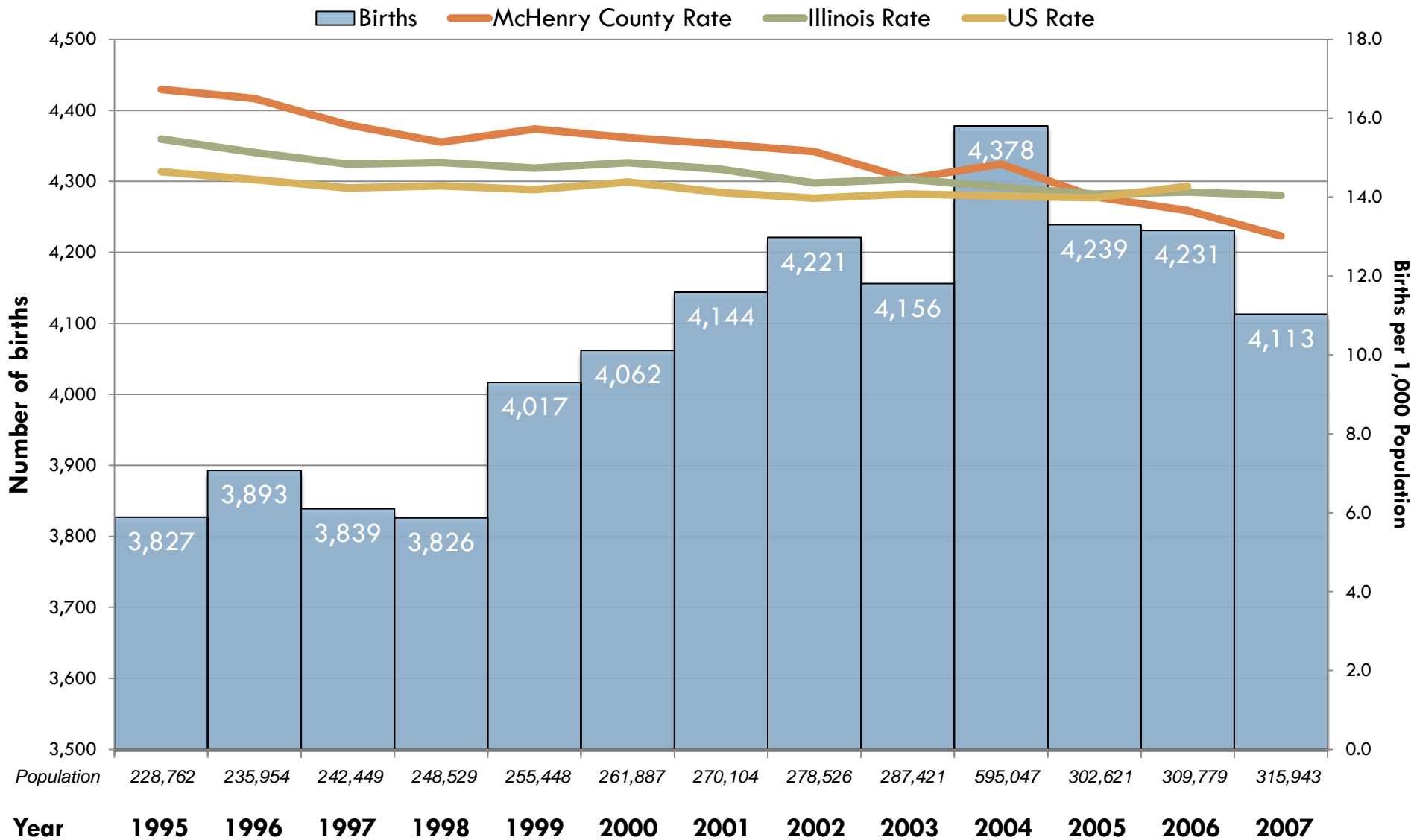
Kristen Harrison, MPH

Epidemiologist

October 2009

# Births and Birth Rates

## McHenry County, Illinois and US: 1995-2007



Source: US DHHS, CDC, NCHS DVS, Natality public-use dataset 1995-2002 & 2003-2006.  
2007 US data unavailable.

# McHenry County Birth Summary

- Increase in the *number* of births
- Decrease in the *birth rate*
  - Reflects large population growth
  
- Comparison to Illinois & US
  - ▣ Prior to 2005, McHenry County had a greater birth rate
  - ▣ Since 2005, McHenry County has had a lower birth rate

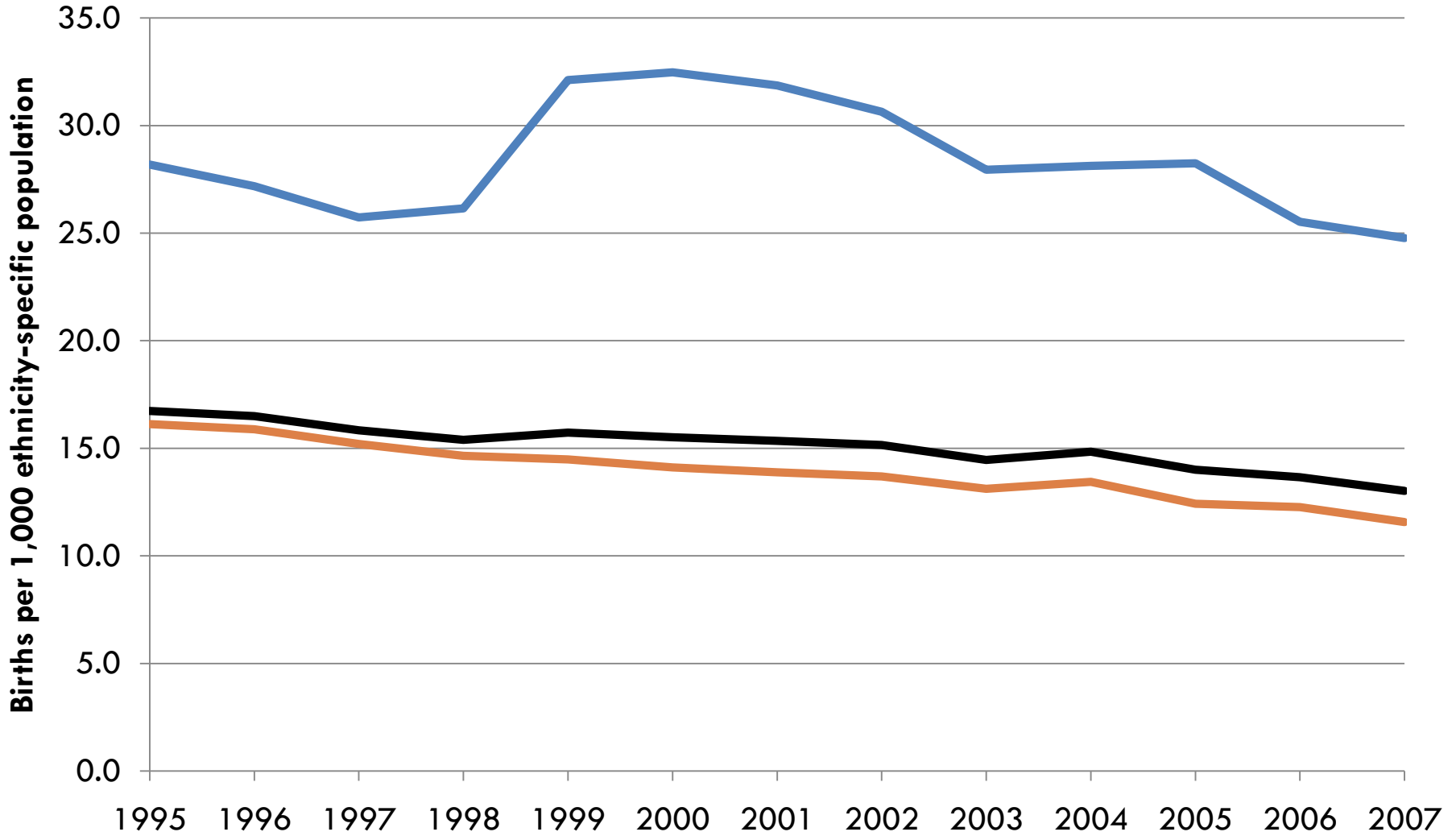
# Who's having babies in McHenry County?

## **Birth rates by demographics of new mothers**

- ▣ Ethnicity
- ▣ Educational Status
- ▣ Marital Status
- ▣ Maternal Age

# Ethnicity-specific Birth Rates McHenry County, 1995-2007

— Total — Hispanic — Non-Hispanic



Source: US DHHS, CDC, NCHS DVS, Natality public-use dataset 1995-2002 & 2003-2006

# Who's having babies in McHenry County?

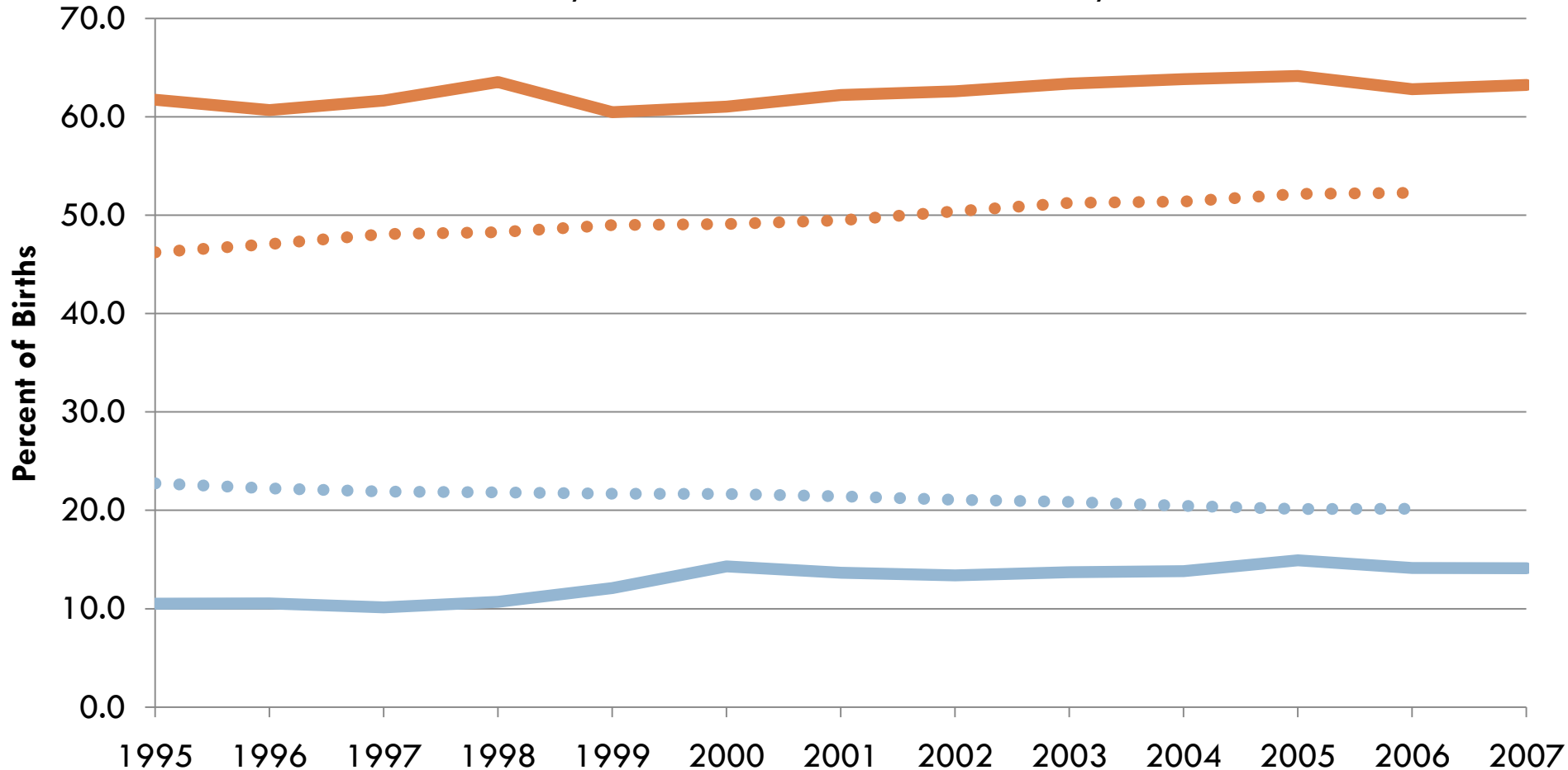
## Birth rates by demographics of new mothers

- ✓ Ethnicity
- ✓ **Educational Status**
- Marital Status
- Maternal Age

# Percent of Births by Maternal Educational Attainment

## McHenry County & Illinois, 1995-2007

— McHenry County <12 years      — McHenry County >12 years  
••• Illinois <12 years      ••• Illinois >12 years



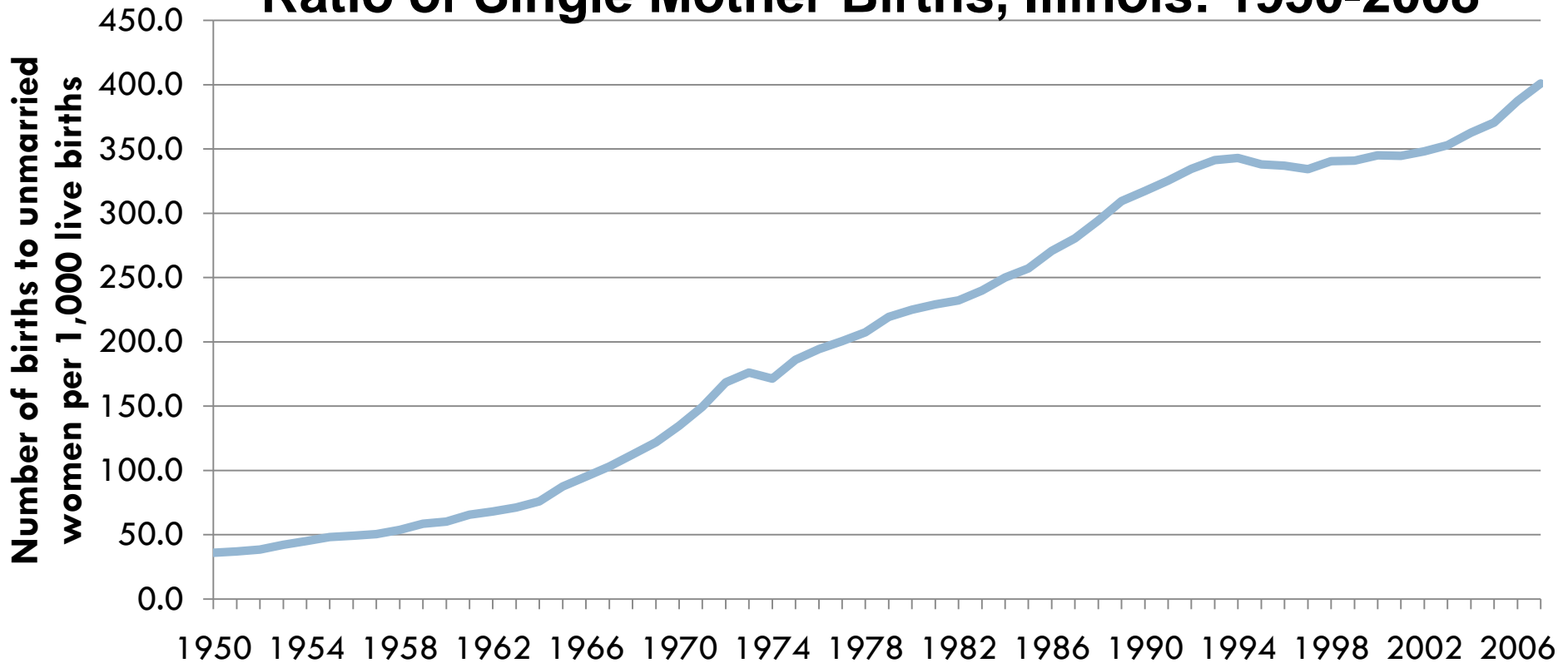
Source: US DHHS, CDC, NCHS DVS, Natality public-use dataset 1995-2002 & 2003-2006.  
2007 Illinois data unavailable.

# Who's having babies in McHenry County?

## Birth rates by demographics of new mothers

- ✓ Ethnicity
- ✓ Educational Status
- ✓ **Marital Status**
- Maternal Age

# Ratio of Single Mother Births, Illinois: 1950-2008



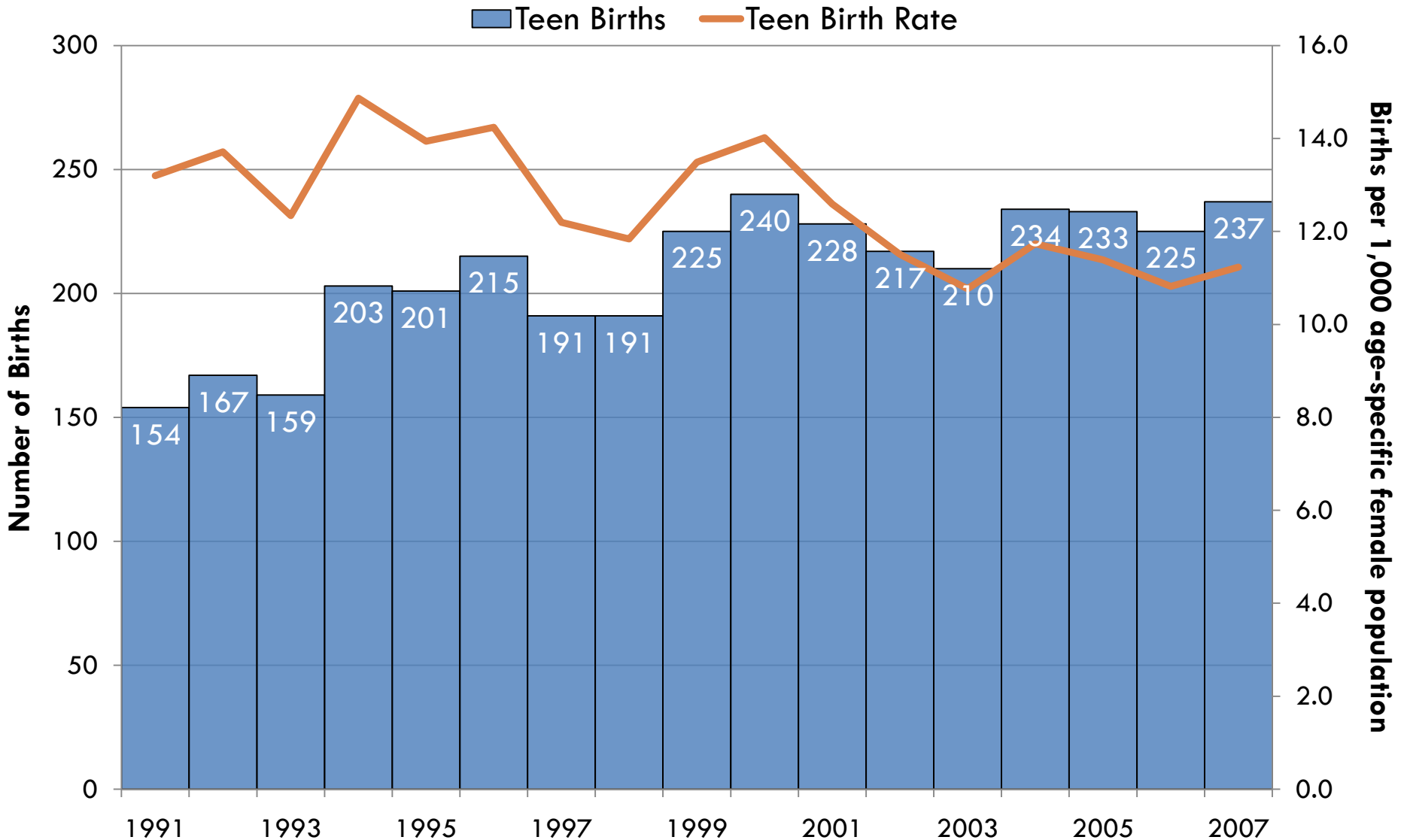
- For 2005-2007, McHenry County had an average of 277 births to unmarried women for every 1,000 live births
- Nationally, ratios are lowest for women aged 35-39 years and are highest among women in their early 20s (Ventura SJ, 2009)

# Who's having babies in McHenry County?

## Birth rates by demographics of new mothers

- ✓ Ethnicity
- ✓ Educational Status
- ✓ Marital Status
- ✓ **Maternal Age**
  - Teens
  - Women 40 years and older

# Teen Births and Birth Rate for 13-19 year olds in McHenry County, 1991-2007

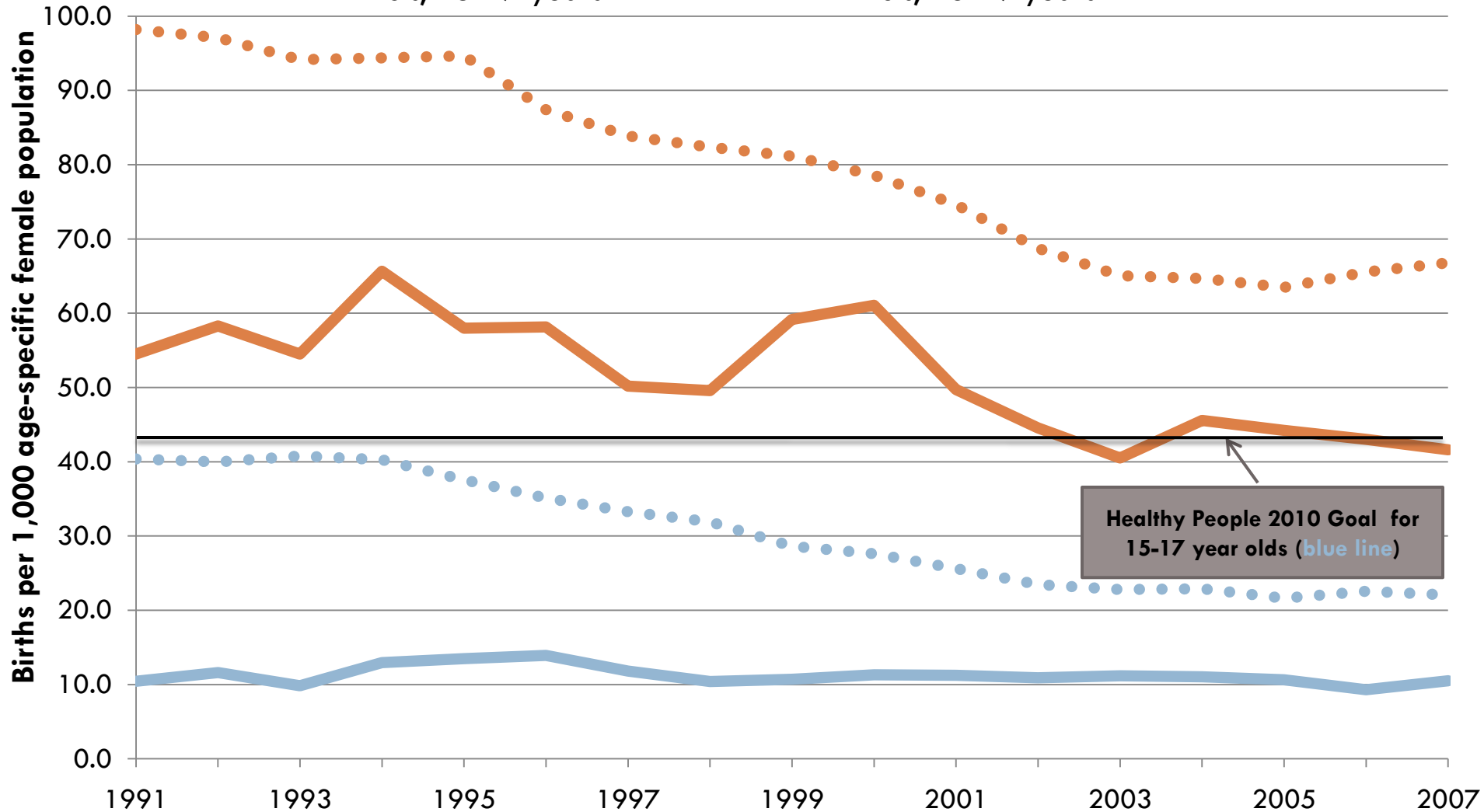


Sources: US DHHS, CDC, NCHS DVS, Natality public-use dataset 1995-2002 & 2003-2006; IDPH Health Statistics; US DHHS, CDC, NCHS, Bridged-race Population Estimates

# Age-specific Birth Rates for Teens

## McHenry County & Illinois, 1991-2007

—●— McHenry County, 15-17 years    
 —●— McHenry County, 18-19 years  
●●● Illinois, 15-17 years    
 ●●● Illinois, 18-19 years

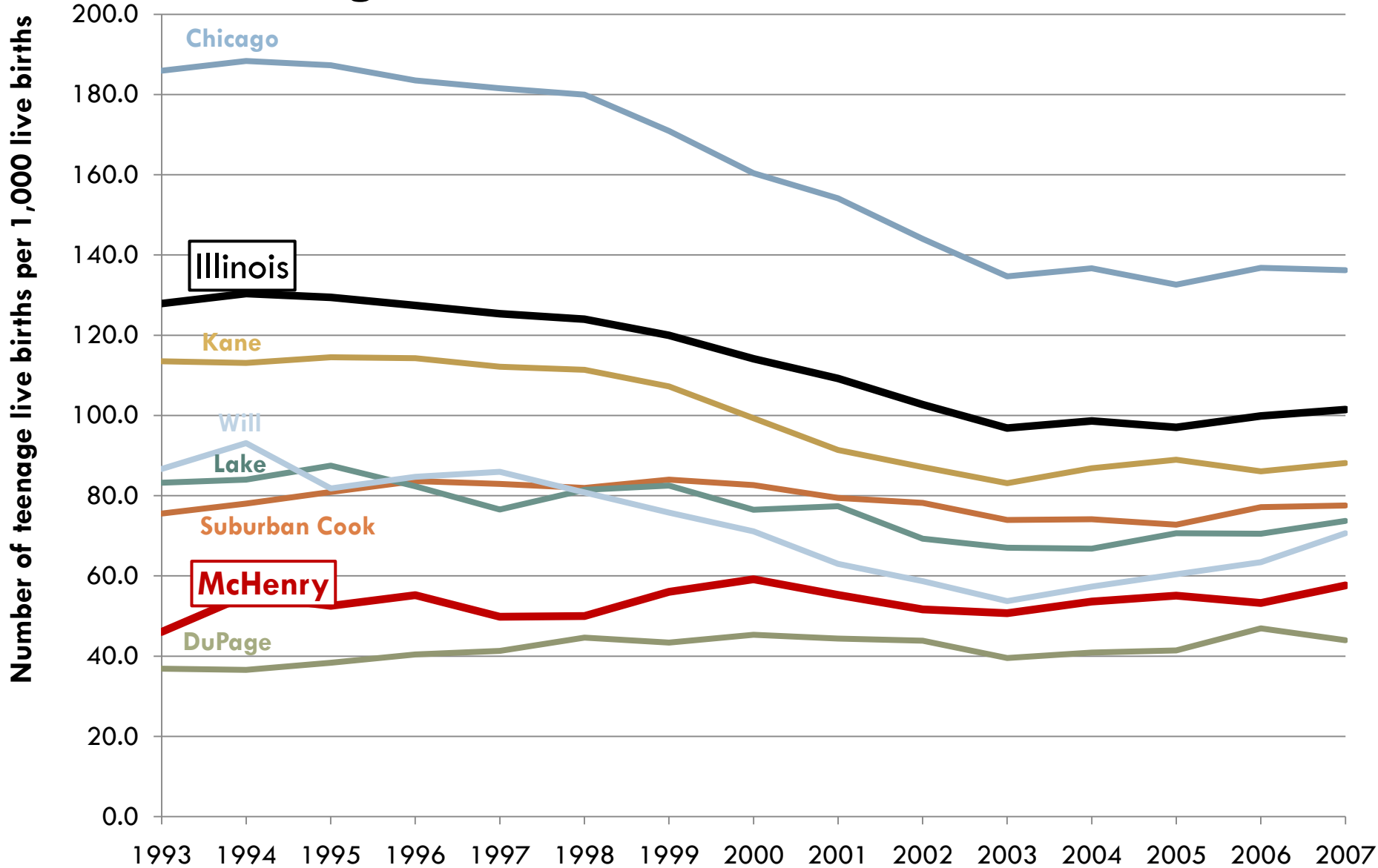


Healthy People 2010 Goal for 15-17 year olds (blue line)

Sources: Illinois Department of Public Health & US DHHS, CDC, NCHS, Bridged-Race Population Estimates



# Teenage Birth Ratio for 13-19 year olds for Chicago, Collar Counties and Illinois, 1993-2007

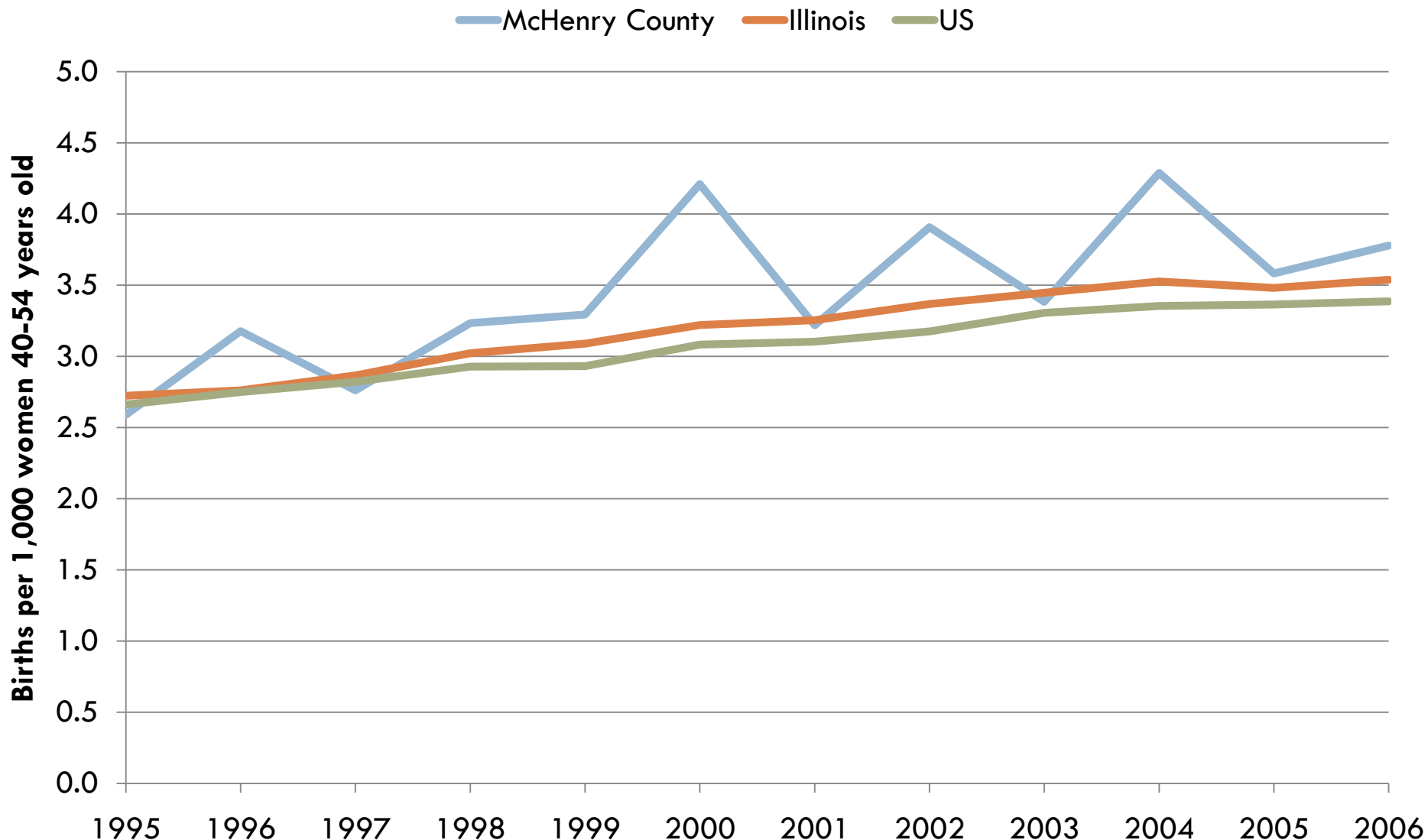


# Who's having babies in McHenry County?

## Birth rates by demographics of new mothers

- ✓ Ethnicity
- ✓ Educational Status
- ✓ Marital Status
- ✓ **Maternal Age**
  - ✓ Teens
  - Women 40 years and older

# Birth Rate Among Women 40-54 Years Old McHenry County, Illinois and US: 1995-2006



Sources: US DHHS, CDC, NCHS DVS, Natality public-use dataset 1995-2002 & 2003-2006;  
IDPH Health Statistics; US DHHS, CDC, NCHS, Bridged-race Population Estimates

# Natality Demographics Summary

- **Ethnicity**

- Hispanics have a higher birth rate than non-Hispanics in McHenry County
- Hispanic birth rate decreased from 2000 to 2007

- **Educational Status**

- Higher proportion of mothers with more than 12 years of education than Illinois and the proportion has remained relatively stable since 1995

- **Marital Status**

- In Illinois, the ratio of births to single mothers has been increasing since 1950, but is lower in McHenry County.

# Natality Demographics Summary (Continued)

- **Maternal Age**

- **Teens**

- Teen birth rate has decreased from 1991 to 2007, even though the absolute number has increased.
    - Highest rates are among 18-19 year olds, but this rate has decreased since the 1990s and the teen birth rate is lower than the Healthy People 2010 goal.
    - Compared to collar counties, McHenry County has consistently had the second lowest teen birth ratio.

- **Women 40 years and older**

- Birth rates among women 40 and older has increased in McHenry County since 1995. This increase is similar to the increase in Illinois and nationally.