

What is MCRide?

MCRide is a great way to get around McHenry County. Whether you need transportation for work, school, shopping, or visits to a friend, MCRide provides an affordable and stress-free way to travel.

Simply call the Pace Call Center at **800-451-4599** or (TTY) **888-847-0093** to register and schedule a ride. When scheduling, let the Call Center staff know your pick-up and drop-off location, along with your desired drop-off time. Be sure to mention if you are a Senior (60 years or older) or an individual with a disability, in order to receive a half price discount and schedule your trips up to 7 days in advance.

At your scheduled pick-up time, meet the MCRide bus at the curb and enjoy the trip to your destination. MCRide is a shared-ride service, so the bus may make stops along the way and pick up other passengers.

Made Possible By

MCRide is brought to you through a partnership between McHenry County; Pace Suburban Bus; the Cities of Crystal Lake, Harvard, Marengo, McHenry, and Woodstock; the Villages of Huntley, Johnsburg, and Ringwood; and the Townships of Dorr, Grafton, Greenwood, Marengo, McHenry, Nunda, and Riley.

MCRide is funded in part by Section 5310 federal transit grants administered by the Regional Transportation Authority and the McHenry County Senior Services Grant Fund.

Title VI Program Notice

Title VI

No person in the United States shall on the ground of race, color, or national origin be excluded from participation in, denied the benefits of, or subjected to discrimination under any program or activity receiving Federal Financial assistance. (42 USC 2000d)

Título VI

Asimismo se le informa que sus datos no podrán ser difundidos sin su consentimiento expreso, salvo las excepciones previstas en la Ley. Lo anterior, de conformidad con lo establecido mediante acuerdo Title VI de la Civil Rights (Título VI de los Derechos de Civiles) Act de 1964.

Por Información en Español

Este folleto está disponible en español, visite nuestro pagina de Internet para obtener una copia:
www.McHenryCountyDOT.org o
www.pacebus.com/sub/general/en_espanol.asp

Questions About MCRide



McHenry County Division of Transportation

Phone: 815-334-4981

Email: mcride@co.mchenry.il.us

Website: www.McHenryCountyDOT.org

Service Complaints

Pace Customer Relations (to file a complaint)

Phone: 800-606-1282 or (TTY) 847-364-5093

Email: passenger.services@pacebus.com

Website: www.pacebus.com



McHenry
County
Dial-A-Ride

1-800-451-4599



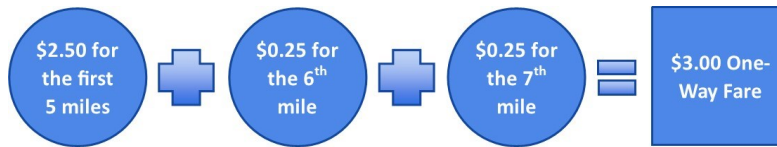
www.McHenryCountyDOT.org
Effective: April 1, 2017



Cost to Ride

	Base Fare (First 5 Miles)	Each Mile (After the First 5)
General Public	\$2.50	\$0.25
Senior (60+)	\$1.25	\$0.25
Individuals with a Disability	\$1.25	\$0.25

MCRide has a distance-based fare structure and all fares must be paid, in cash, upon boarding the bus. Drivers will not have change. Below is a sample fare calculation for a member of the general public travelling 7 miles.



Operating Hours



Monday - Friday	6:00 am - 7:00 pm
Saturday	9:00 am - 5:00 pm
Sunday	No Service

More Information

- All vehicles are wheelchair accessible
- Bus will pick-up and drop-off other passengers
- Bus drivers cannot carry passenger's bags
- Up to 2 children (7 years or younger) ride free per paying adult
- Riders must cancel a trip at least 2 hours before the scheduled pick-up time

Where Can I Ride?

General Public...

Everyone is eligible for travel to and from the following locations:

- The Cities of Crystal Lake, Harvard, Marengo, McHenry and Woodstock
- The Villages of Johnsburg, Ringwood and Huntley (including Kane County)
- Marengo and Riley Townships
- Valley Hi Nursing Home and McHenry County DOT
- Park-and-Ride in Lake in the Hills (IL 31 & Virginia)
- Transfer points to Lake County services: Island Foods in Island Lake, Walgreens in Lakemoor, and Fox Lake Metra Station

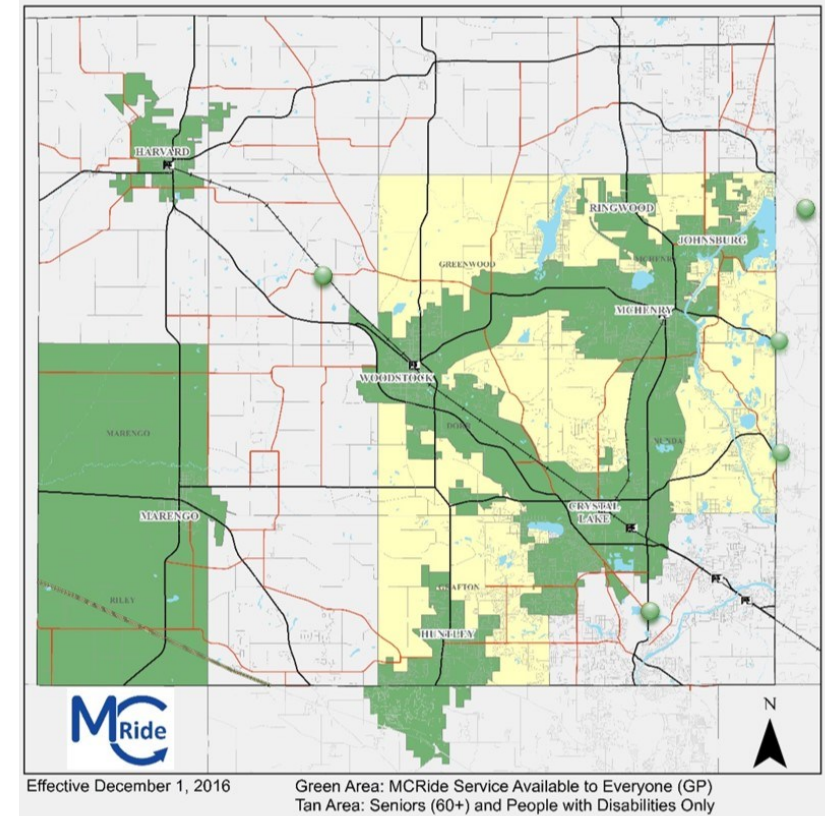
Green Areas on Service Area map

Seniors (60+) & Individuals with Disabilities...

Can also travel to and from any location within Dorr, Grafton, Greenwood, McHenry and Nunda Townships.

Green & Yellow Areas on Service Area map

Service Area Map



Riders may travel to and from any service area for which they are eligible: locations do not need to be adjacent.

Schedule a Ride



Schedule a ride with the Pace Call Center by calling **1-800-451-4599** or (TTY) **888-847-0093**.

- Call takers will register you during your first call
- Seniors and Individuals with Disabilities can schedule a ride up to 7 days ahead
- General Public can schedule a ride 24 hours in advance
- Remember to schedule both legs of your trip!

Another Option for Seniors and Individuals with a Disability

The **McHenry Township Express** provides door-to-door transportation for seniors (60+) and individuals with a disability that live in McHenry Township.

- Register with the Township by calling 815-385-5605
- Once registered, call the Call Center at 800-451-4599 to schedule a ride at least 24 hours in advance
- Operates Monday - Friday, 8:00 am - 3:00 pm