

McHenry County Department of Health 2017-18 Influenza Surveillance

October 1st, 2017 – January 6th, 2018 (Weeks 40-1)

The McHenry County Department of Health annually conducts influenza surveillance through two different systems. The first system is based on weekly reporting of sentinel healthcare sites of rapid test-positive influenza cases (Figure 1a) and number of clients seen with influenza-like illness (ILI) (Figure 1b), which is defined as a fever $\geq 100^{\circ}\text{F}$ and cough and/or sore throat in the absence of a known cause other than influenza. The second system is a daily reporting of school absenteeism and absenteeism due to ILI (figure 2).

Figure 1a. Percent of Rapid Influenza Tests that are Positive at McHenry County Sentinel HealthCare Sites

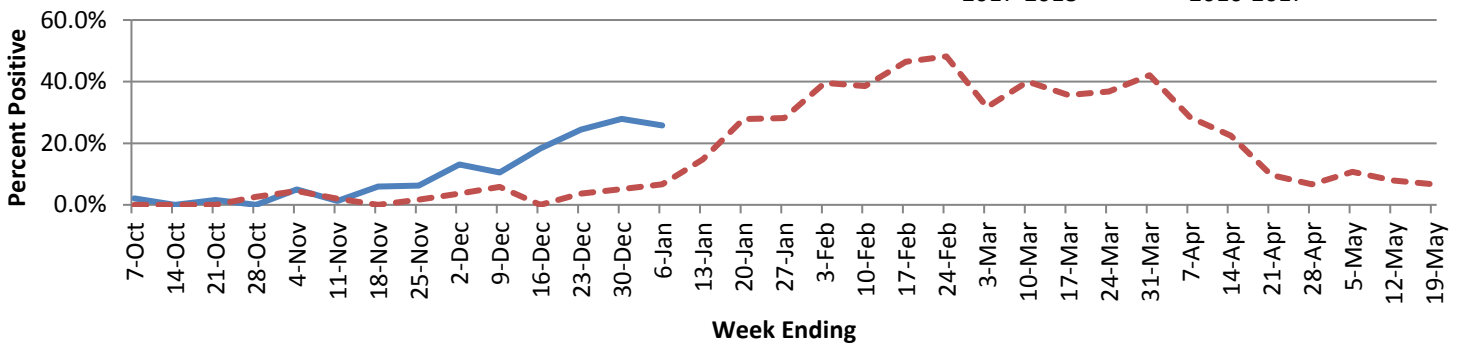


Figure 1b. Percent of Patient Visits for Influenza-Like Illness at McHenry County Sentinel Healthcare Sites

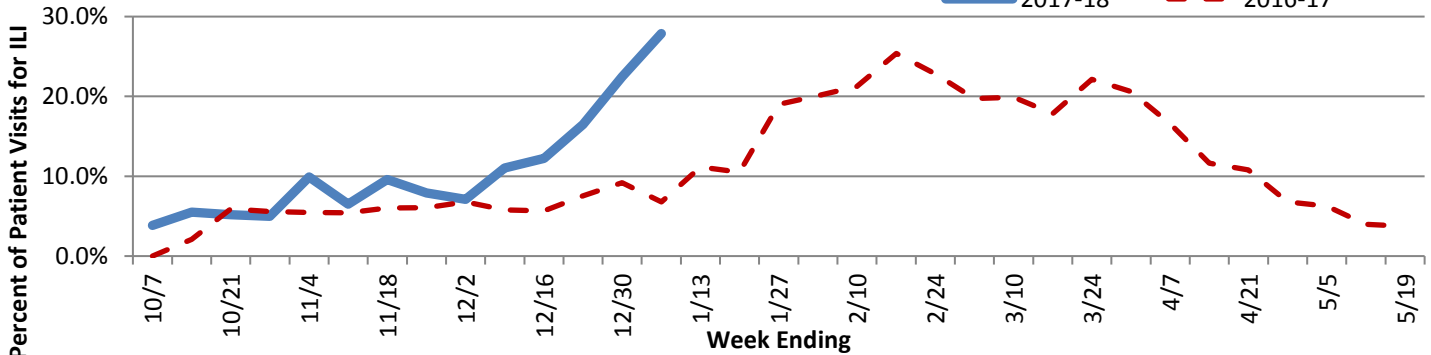
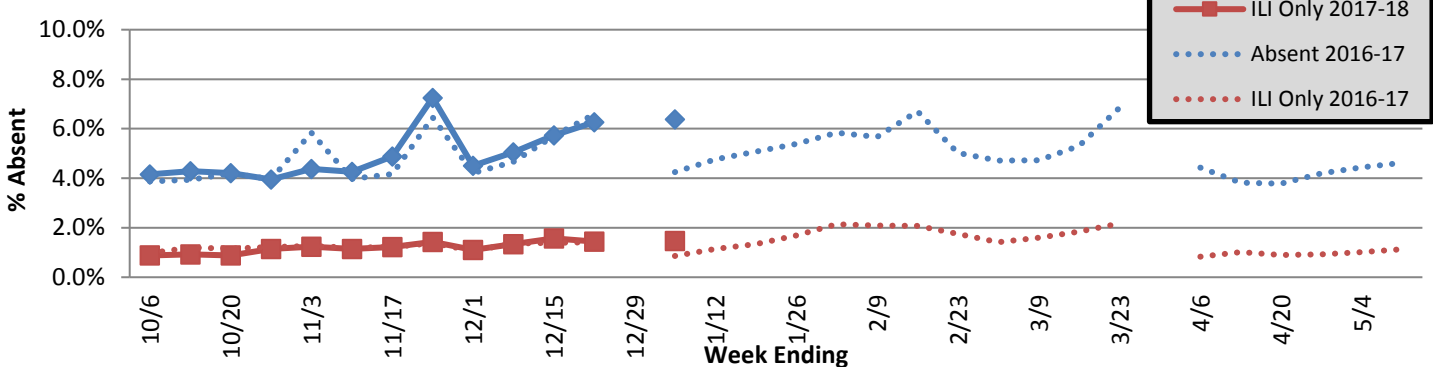


Figure 2. School Surveillance Average Daily Absenteeism Rate for All Reporting Schools by Week for Total Absenteeism and for ILI-related Absenteeism



For **National Influenza Surveillance**, visit the US Centers for Disease Control and Prevention Influenza Surveillance website at: <http://www.cdc.gov/flu/weekly/>



"Working to prevent disease and promote health and safety for all people of McHenry County since 1966."

Updated on: 1/10/2018

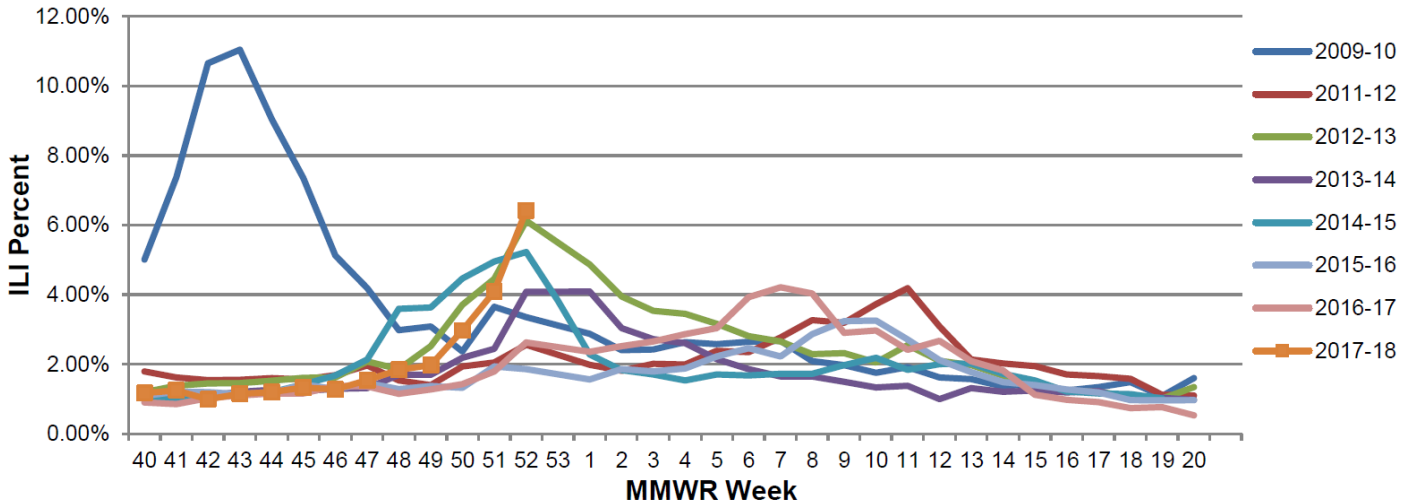
McHenry County Department of Health 2017-18 Influenza Surveillance

October 1st, 2017 – January 6th, 2018 (Weeks 40-1)

The state of Illinois reports flu activity on a weekly basis from sentinel hospitals throughout the state. For more information on influenza in the state of Illinois please see <http://www.dph.illinois.gov/topics-services/diseases-and-conditions/influenza/surveillance>

Illinois Sentinel Influenza-Like Illness (ILI) Surveillance

Influenza-Like Illness Percent by Season, Illinois, 2009-2018

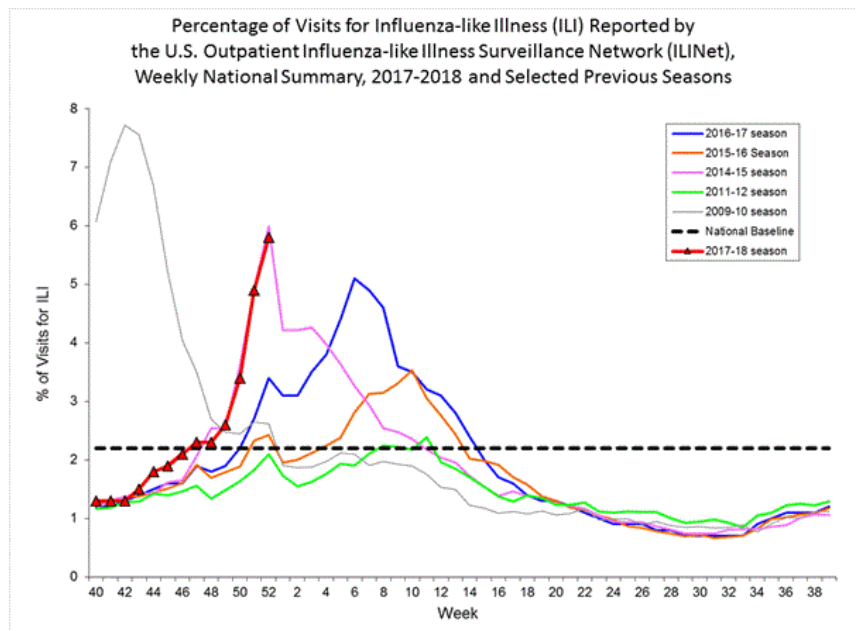


FluView: Weekly U.S. Influenza Surveillance Report: Summary (Week 52 ending 12/30/2017)

(<http://www.cdc.gov/flu/weekly/>)

- During week 52, influenza activity increased sharply in the United States.
- During week 52 the percent of submitted specimens testing positive was 25.5%. Of the specimens testing positive for influenza, 85% were influenza A and 13% were influenza B. Since week 40, 11% of specimens submitted were positive. Of the positive specimens, 83% were positive for influenza A, 17% positive for influenza B.
- During week 52 the proportion of outpatient visits for ILI was 5.8% which is above the national baseline of 2.2%.
- The proportion of deaths attributed to pneumonia and influenza was 6.7% for week 50 which was below the national epidemic threshold of 6.9% for week 50.
- 13 pediatric deaths have been reported during the 2017-2018 flu season.

Additional data can be found at: <http://gis.cdc.gov/GRASP/Fluview/PedFluDeath.html>.



* Illinois and CDC data is only available through week 52 at the time of this report.

For **National Influenza Surveillance**, visit the US Centers for Disease Control and Prevention Influenza Surveillance website at: <http://www.cdc.gov/flu/weekly/>



“Working to prevent disease and promote health and safety for all people of McHenry County since 1966.”

Updated on:
1/10/2018