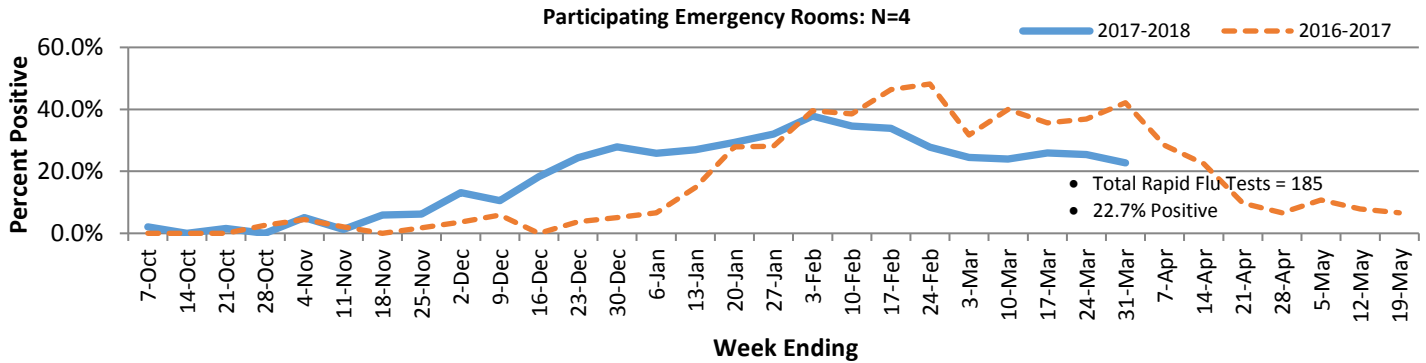


# McHenry County Department of Health 2017-18 Influenza Surveillance

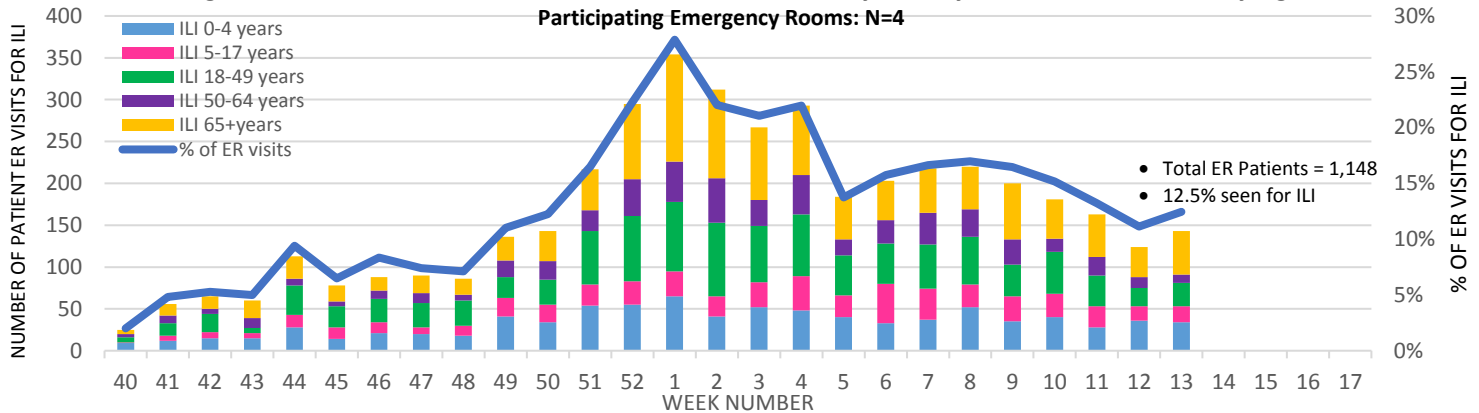
## October 1<sup>st</sup>, 2017 – March 31<sup>st</sup>, 2018 (Weeks 40-13)

The McHenry County Department of Health (MCDH) annually conducts influenza surveillance through two different systems. The first system is based on weekly reporting of sentinel healthcare sites of rapid test-positive influenza cases (Figure 1a) and number of clients seen with influenza-like illness (ILI) (Figure 1b), which is defined as a fever  $\geq 100^{\circ}\text{F}$  and cough and/or sore throat in the absence of a known cause other than influenza. The second system is a daily reporting of school absenteeism and absenteeism due to ILI (figure2).

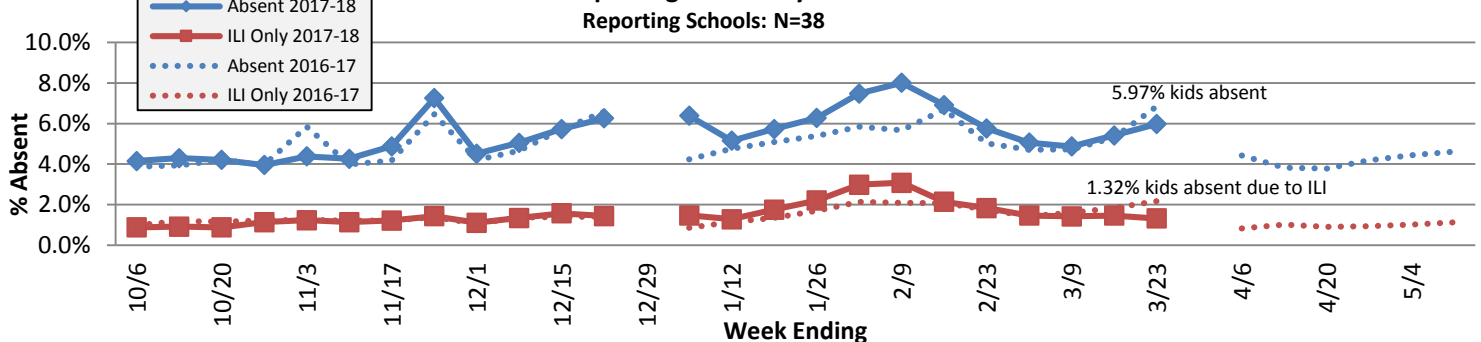
**Figure 1a. Percent of Rapid Influenza Tests that are Positive at McHenry County**



**Figure 1b. Influenza-Like-Illness Surveillance in McHenry County: Percent of ILI Visits by Age**



**Figure 2. School Surveillance: Average Total Daily Absenteeism and ILI-Related Absenteeism Rate for All Reporting Schools by Week**



**MCDH has identified 16 influenza outbreaks at long term care facilities\* in the 2017-2018 flu season.**

\*facilities can have subsequent outbreaks, which are counted separately.

For **National Influenza Surveillance**, visit the US Centers for Disease Control and Prevention Influenza Surveillance website at: <http://www.cdc.gov/flu/weekly/>



*“Working to prevent disease and promote health and safety for all people of McHenry County since 1966.”*

Updated on:  
4/5/2018

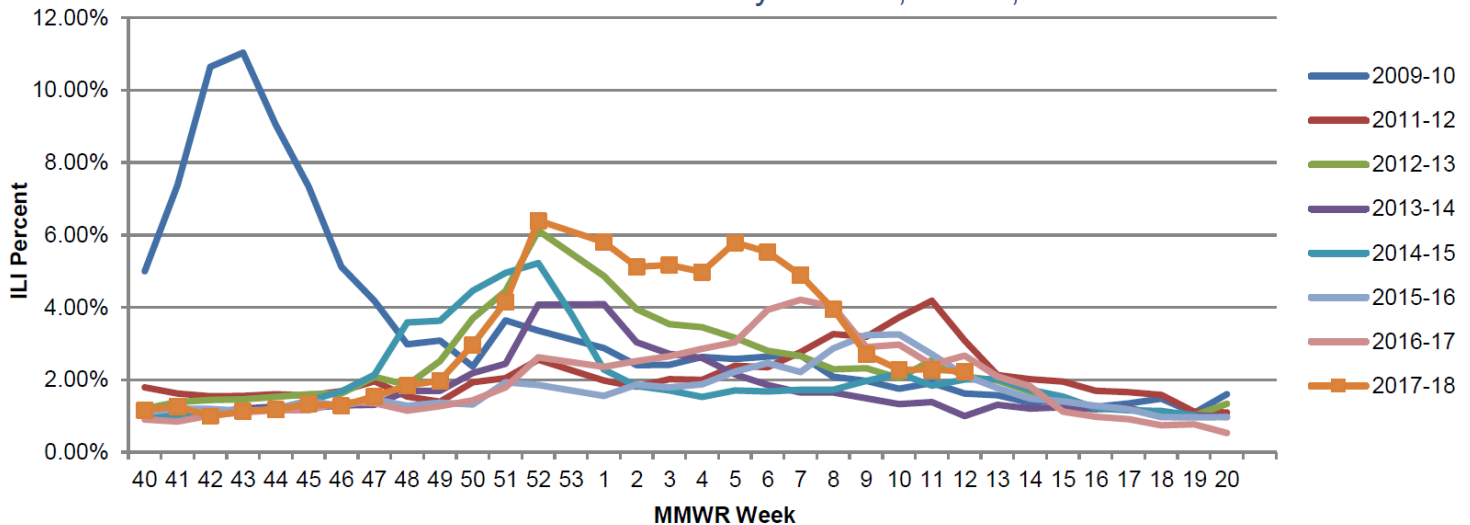
# McHenry County Department of Health 2017-18 Influenza Surveillance

October 1<sup>st</sup>, 2017 – March 31<sup>st</sup>, 2018 (Weeks 40-13)

The state of Illinois reports flu activity on a weekly basis from sentinel hospitals throughout the state. For more information on Influenza in the state of Illinois please see <http://www.dph.illinois.gov/topics-services/diseases-and-conditions/influenza/surveillance>

## Illinois Sentinel Influenza-Like Illness (ILI) Surveillance

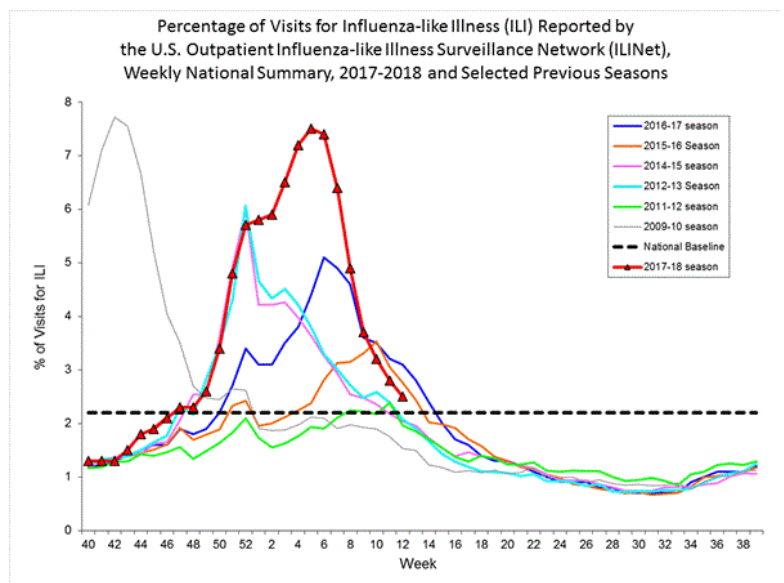
Influenza-Like Illness Percent by Season, Illinois, 2009-2018



## FluView: Weekly U.S. Influenza Surveillance Report: Summary (Week 12 ending 3/24/2018)

(<http://www.cdc.gov/flu/weekly/>)

- During week 12, influenza activity continued to decrease in the United States.
- During week 12 the percent of submitted specimens testing positive was 14.7%, a decrease from previous weeks. Of the specimens testing positive for influenza, 42.2% were influenza A and 57.8% were influenza B. Since week 40, 19.8% of specimens submitted were positive. Of the positive specimens, 70.3% were positive for influenza A, 29.7% positive for influenza B.
- During week 12 the proportion of outpatient visits for ILI was 2.5% which is above the national baseline of 2.2%.
- The proportion of deaths attributed to pneumonia and influenza was 7.7% for week 10 which was above the national epidemic threshold of 7.4% for week 10.
- 137 pediatric deaths have been reported during the 2017-2018 flu season. Additional data can be found at: <http://gis.cdc.gov/GRASP/Fluview/PedFluDeath.html>.



\* Illinois and CDC data is only available through week 12 at the time of this report.

For **National Influenza Surveillance**, visit the US Centers for Disease Control and Prevention Influenza Surveillance website at: <http://www.cdc.gov/flu/weekly/>



*“Working to prevent disease and promote health and safety for all people of McHenry County since 1966.”*

Updated on:  
4/5/2018